
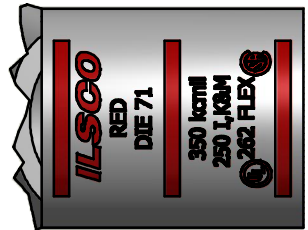
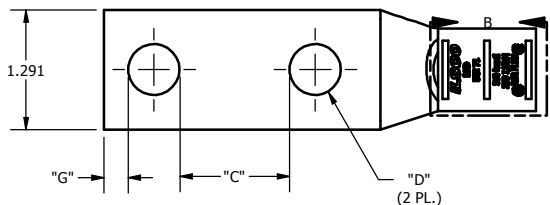
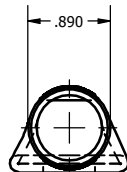
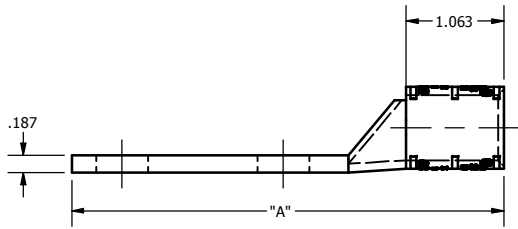


SCREW: NONE	MATERIAL: COPPER	REV: F	 800-776-9775 www.ilSCO.com
CAT. NO.: SEE CHART	PLATING: EL-TIN	DRAWN BY:DW SCALE: NTS	
INFORMATION SHEET:FORM 157	MARKING: SEE CHART	DATE:7/5/2007 SIZE: B	
			DWG NO: Y1311-D
			SHEET: 1 OF 1



DETAIL B  
TOP AND BOTTOM INK MARKINGS ARE IDENTICAL  
INK COLOR: RED



Catalog Number	"A"	"C"	"D"	"G"	TANG MARKING
CSWD-350-14-12	2.936	0.219	0.281	0.180	
CSWD-350-14-58	3.123	0.344	0.281	0.180	
CSWD-350-14-34	3.123	0.469	0.281	0.180	
CSWD-350-14-1	3.373	0.719	0.281	0.180	
CSWD-350-516-58	3.123	0.282	0.343	0.180	
CSWD-350-516-34	3.373	0.407	0.343	0.180	
CSWD-350-516-78	3.373	0.532	0.343	0.180	
CSWD-350-516-1	3.623	0.657	0.343	0.180	
CSWD-350-516-134	4.186	1.407	0.343	0.180	ILSCO, CSWD-350-516-134, 5/16 X 1 3/4, 350kcmil, 250 IKM / 262 FLEX, DIE 71, UL, CSA
CSWD-350-38-34	3.373	0.344	0.406	0.211	
CSWD-350-38-78	3.623	0.469	0.406	0.211	
CSWD-350-38-1	3.623	0.594	0.406	0.211	ILSCO, CSWD-350-38-1, 3/8 X 1, 350 kcmil, 250 IKM / 262 FLEX, DIE 71, UL, CSA
CSWD-350-38-116	3.623	0.656	0.406	0.211	
CSWD-350-38-118	3.811	0.719	0.406	0.211	
CSWD-350-38-134	4.311	1.344	0.406	0.211	ILSCO, C-350-38-134, 3/8 X 1-3/4, 350 kcmil, 250 IKM / 262 FLEX, DIE 71, UL, CSA
CSWD-350-38-2	4.686	1.594	0.406	0.211	
CSWD-350-12-1	3.811	0.438	0.562	0.265	ILSCO, CSWD-350-12-1, 1/2 X 1, DIE 71, 350 kcmil, 250 IKM / 262 FLEX, UL, CSA
CSWD-350-12-114	4.186	0.688	0.562	0.265	ILSCO, CSWD-350-12-114, 1/2 X 1-1/4, 350 kcmil, 250 IKM / 262 FLEX, DIE 71, UL, CSA
CSWD-350-12-112	4.311	0.938	0.562	0.265	
CSWD-350-12-134	4.686	1.188	0.562	0.265	ILSCO, C-350-12-134, 1/2 X 1-3/4, 350 kcmil, 250 IKM / 262 FLEX, DIE 71, UL, CSA
CSWD-350-12-178	4.686	1.313	0.562	0.265	

THE INFORMATION CONTAINED WITHIN THIS DOCUMENT IS PROPRIETARY TO ILSCO AND MAY NOT BE DISCLOSED WITHOUT PRIOR WRITTEN CONSENT